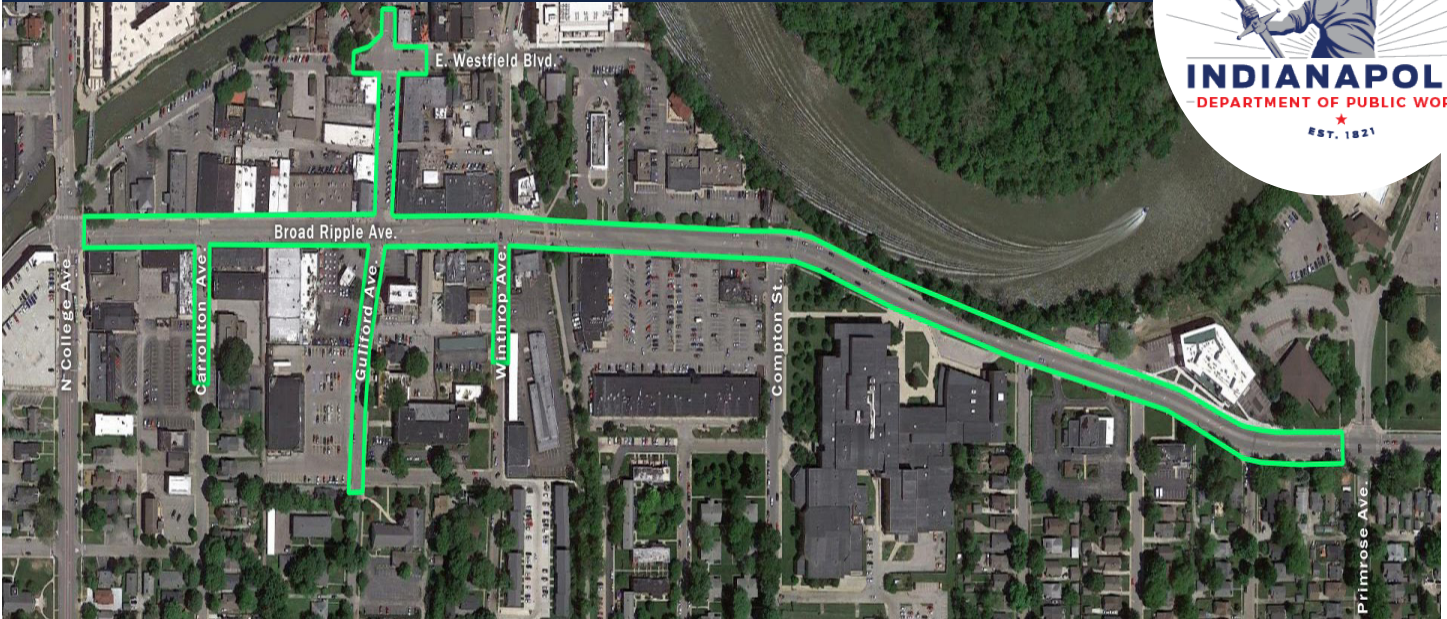


ST-11-066 - BROAD RIPPLE AVENUE IMPROVEMENTS BETWEEN COLLEGE AND PRIMROSE AVENUES



PROJECT DETAILS

This project addresses expanded traffic and pedestrian connectivity, along with increased stormwater capacity to reduce flooding. Improvements include new stormwater trunkline; stormwater treatment structures; manholes and inlets; new stormwater treatment structures; a widened south sidewalk from College to Winthrop Avenues; pavement and sidewalk replacement, including ADA-compliant curb ramps; traffic and pedestrian signal upgrades; ornamental lighting and installation of a new a new 12-foot-wide multi-use trail from the Monon Trail to Primrose Avenue. For information, visit indy.gov/activity/major-transportation-projects.

PROJECT NUMBER: ST-11-066

PROJECT STATUS: In Design

ANTICIPATED CONSTRUCTION: Late 2021 to Late 2022

EST. CONSTRUCTION COST: Approx. \$6 Million

NEIGHBORHOODS: Broad Ripple

FOR MORE INFORMATION

DPWEngineering@indy.gov

317-327-2656 • indy.gov/dpw

The Indianapolis Department of Public Works (DPW) continues to transform Indianapolis neighborhoods through the restoration of deteriorating thoroughfares, residential streets, sidewalks and bridges, as well as addressing neighborhood drainage and flooding issues. This investment continues to transform neighborhoods throughout Indianapolis.

These projects create local jobs and increase public safety for neighborhoods and residents, which supports DPW's commitment to make Indianapolis a more livable city.



Keep the Stormwater Clean and Flowing!

HOMEOWNER RESPONSIBILITIES

