



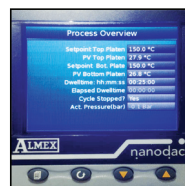
T6L CONTROL PANEL



The T6L control panel has the features of the T6 with the addition of data logging capabilities. The T6L monitors, controls and captures the platen temperature with similar components as previous models. Encased in a durable IP66 rated, waterproof, dustproof and impact resistant case, it can withstand all types of conditions, including extreme weather and moisture. The simple, rugged design allows easy access to all components. Protected fuses are installed on the face of the box for ease of replacement. Temperature and Pressure data can be exported via USB.

FEATURES:

- All platen and control fuses are face mounted and easily accessible
- 3 phase ammeter for element and power monitoring
- Includes a main supply and platen cables in a separate case
- Temperature and Pressure data can be exported via USB
- 8 gb of data are captured on the panel
- Meets IP66/67 rating
- Under 30 lbs / 13.6 Kg.
- All units include a pump plug
- High or over temperature alarm
- Rugged polypropylene resin case
- 30 and 55 amp versions available



ALMEX
GROUP

Note: The above data is based on extensive testing and represents standard values. Shaw Almex Industries reserves the right to make changes without prior notice and refuses all claims arising from such changes. All items are subject to change without previous notice.