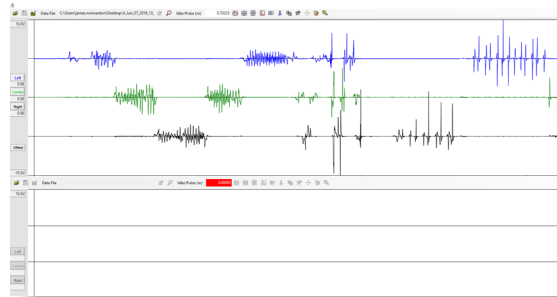




## BELTGUARD

The Almex BELTGUARD System is an advanced non-destructive belt scanning system that can determine damage, splice layout, splice deterioration and corrosion in any steel cable belting.



### OPTIONS

- Diagnostic Service inspections onsite
- Permanent install and monitoring by Almex Global Services staff remotely for any location

The Almex BELTGUARD System is an advanced non-destructive belt scanning system that can determine damage, splice layout, splice deterioration and corrosion in any steel cable belting.

Early detection and repair can decrease down-time and costly extensive repairs or belt replacement and potentially avoid catastrophic events.

The BELTGUARD system is comprised of rare earth magnets that magnetize the steel cables within the conveyor belt as we read magnetic flux from the damaged/cut/corroded cables. BELTGUARD works universally for any Steel cable belt manufacturer and any belt thickness or belt speed. The system will provide alerts as various tolerance points set to provide a NDT solution and early warning of any potential belt failures.

Setup is Fast and easy setup for portable onsite scanning services. The BELTGUARD system can run and operate as the mine continues its normal production schedule.

For permanent monitoring, Almex Global Services staff can permanently mount the equipment and remotely monitor the conveyor belt anywhere in the world through our Global Services platform.



**Note:** The above data is based on extensive testing and represents standard values. Shaw Almex Industries reserves the right to make changes without prior notice and refuses all claims arising from such changes. All items are subject to change without previous notice.