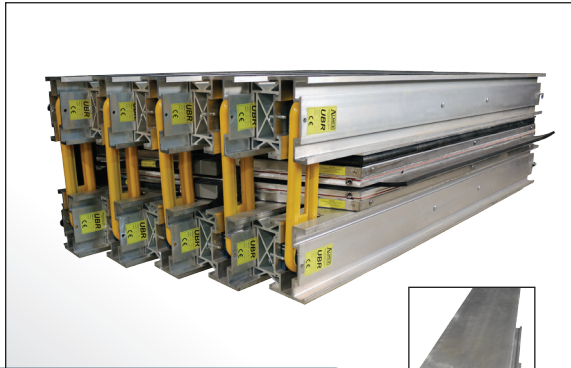
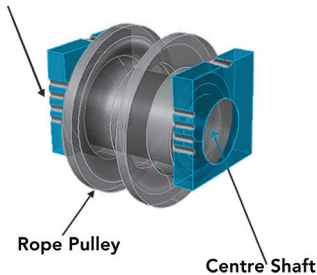




# UBR SECTIONAL VULCANIZING PRESS



**HTR Daylight Adjustment Block**  
Eccentric pin location provides daylight adjustment for various belt thickness.



**HTR High Tensile Restraint System**

The UBR Sectional Vulcanizing Press offers a flexible design for fabric or steel cord conveyor belt splices. Heavy pressure bolts are replaced with the corrosion-proof High Tensile Restraint (HTR) System. HTR is made with advanced composite materials, and is significantly lighter and stronger, greatly improving operator safety. Ultra-light UBR beams weigh only 13.5 kg/meter and can be configured for different belt thicknesses by changing the spacing of the beams with the unique connector blocks.

## FEATURES

- High Tensile Restraint (HTR) System is 70% lighter than standard bolts
- Unique design stores restraint system inside beams
- HTR daylight adjustment blocks accommodate various belt thickness
- Patented connectors ensure proper spacing

## SPECIFICATIONS

• **PLATEN** Flexible platens contour with irregularities in the belt, ensuring uniform pressure across the entire splice area. Platens are built with extruded plank, durable silicon heating elements and composite insulating package. Platens available in rhombic, rectangular or Unipress (2 sets of rhombic/rectangular platens) configurations.

• **TRAVERSE BARS** Box beam construction is shaped to allow for easy carrying with flanges located on each corner. Bars are available in three profiles, UBR, UBRX and UBRXL and are designed to accommodate wider belt lengths and higher pressures. Patented connector blocks ensure proper spacing between the bars during setup and also function as a secondary safety system.

The **High Tensile Restraint System (HTR)** works with the traverse bars to contain the components of the press. Unique adjustment blocks allow for eight different daylight adjustments. HTR restraints can conveniently be stored inside the traverse bars during transportation. Each HTR is encased in protective urethane. Safety factors are increased three fold with the use of the HTR System.

• **CONTROL PANELS** Three available types: Standard T4P, T4P with ground fault and SG1 Switchgear Box. SG1 is used with ALMEXPAD and controls two separate sets of platens. For further information on control panels refer to product sheet.

• **PRESSURE/COOLING** Pressure Bag provides even pressure over the total splice area. For pressures above 7 kg/cm sq (100 PSI) a Fluid Pressure Pump and Reservoir unit Model HPP20-4 is mandatory to pressurize the bag with fluid. Pump includes gauges for fluid level and pressure. Extra reservoirs are easily added for larger presses. HPP20-4 offers pressure with cooling option. Larger fluid pressure systems available for special applications only, all larger units include cooling function as standard. Models available: HPPC-100 (100 US gallon capacity), HPPC-300 (300 US gallon capacity) and HPPC-500 (500 US gallon capacity).



**Note:** The above data is based on extensive testing and represents standard values. Shaw Almex Industries reserves the right to make changes without prior notice and refuses all claims arising from such changes. All items are subject to change without previous notice.

**STEPS TO SECTIONAL MODEL SELECTION**

The proper model selection for a SECTIONAL vulcanizer depends on determining dimensions A and B (see diagram at right).

A – the platen length (A) is calculated by adding to the belt manufacturer’s recommended splice length,

- 6 inches (150 mm) for fabric ply belt
- 8 inches (205 mm) for finger splice
- 14 inches (355 mm) for steelcord belt

B – the platen width (B) which includes the bias angle, is determined by adding to the belt width

- 6 inches (150 mm) for fabric belt
- 8 inches (200 mm) for steelcord belt

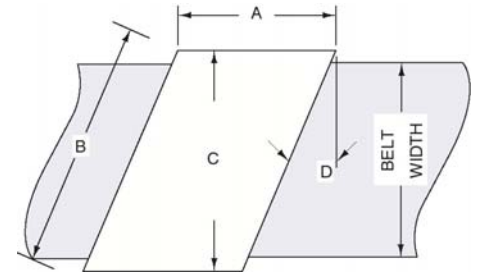
To this figure multiply by:

- 1.07 for 22 degree bias angle
- 1.05 for 17 degree bias angle

Dimensions A and B represent the outside platen dimensions. Scan down the list below until you arrive at a platen size that corresponds with your calculations.

If the size you require is not listed below our Sales department will be happy to recommend a suitable size.

Custom sizes, rectangular configurations and multiple platen arrangements are also available upon request.

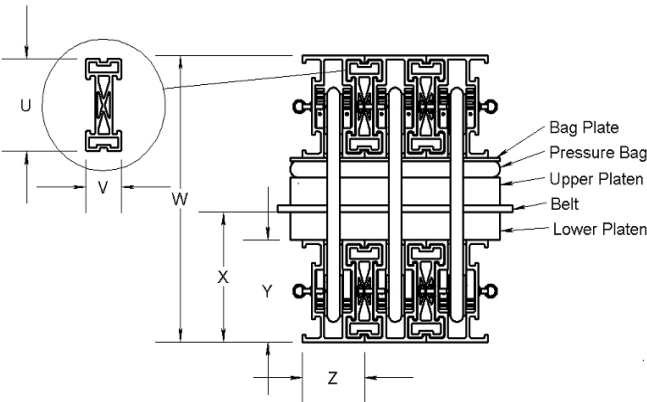


A = Length of platen along the belt.

B = Width of platen across the belt on the bias.

C = Right angle dimension across the belt, plus edge overlap.

D = Bias angle.



|   | RESTRAINT BLOCK UBR / UBRX NON SPACED |     | RESTRAINT BLOCK UBR / UBRX SPACED |     | RESTRAINT BLOCK UBRXL NON SPACED |       | RESTRAINT BLOCK UBRXL SPACED |       |
|---|---------------------------------------|-----|-----------------------------------|-----|----------------------------------|-------|------------------------------|-------|
|   | 2.15 lbs (1 kg)                       |     | 2.875 lbs (1.3 kg)                |     | 2.78 lbs (1.26 kg)               |       | 4.2 lbs (1.9 kg)             |       |
|   | in                                    | mm  | in                                | mm  | in                               | mm    | in                           | mm    |
| U | 7                                     | 178 | 7                                 | 178 | 11.4                             | 289.5 | 11.4                         | 289.5 |
| V | 2.875                                 | 73  | 4.53                              | 115 | 2.25                             | 57    | 3.9                          | 99    |

|   | UBR   |     | UBRX   |       | UBRXL  |       |
|---|-------|-----|--------|-------|--------|-------|
|   | in    | mm  | in     | mm    | in     | mm    |
| W | 21.75 | 552 | 27.75  | 705   | 32.25  | 819   |
| X | 9.875 | 251 | 12.625 | 320.5 | 15.125 | 384   |
| Y | 7.75  | 197 | 10.5   | 267   | 13     | 330   |
| Z | 5     | 127 | 5      | 127   | 4.94   | 125.5 |

The following is only a small sampling of Sectional vulcanizing presses available from Shaw-Almex Industries.

Custom sizes, rectangular configurations, multiple platen arrangements or models for higher operating pressure available on request.

Contact us or your local representative for more information.

**100 PSI (7 kg/cm sq.) units suitable for splicing fabric ply belting.**

| Model Number                | Maximum Belt Width |      | Platen Dimensions |     |    |      |    |      | Splice Length (subtract 2 in / 50 mm for finger splice) |     | Traverse Bar System |       |            | Main Component Weights |     |    |        | Approximate Total Weight |      |     |
|-----------------------------|--------------------|------|-------------------|-----|----|------|----|------|---|-----|---------------------|-------|------------|------------------------|-----|----|--------|--------------------------|------|-----|
|                             |                    |      | A                 |     | B  |      | C  |      |   |     | Nbr of Sets         | Type  | Bar Length |                        | Bar |    | Platen |                          |      |     |
|                             | in                 | mm   | in                | mm  | in | mm   | in | mm   | in  | mm  |                     |       | in         | mm                     | lbs | kg | lbs    | kg                       | lbs  | kg  |
| SVP-1930-22-100-T6-3UBRSP44 | 24                 | 610  | 19                | 480 | 30 | 760  | 28 | 710  | 13  | 330 | 3                   | UBRSP | 44         | 1118                   | 35  | 16 | 55     | 25                       | 459  | 209 |
| SVP-1937-22-100-T6-3UBRSP51 | 30                 | 760  | 19                | 480 | 37 | 940  | 34 | 865  | 13  | 330 | 3                   | UBRSP | 51         | 1295                   | 41  | 19 | 68     | 31                       | 524  | 238 |
| SVP-1943-22-100-T6-3UBRSP57 | 36                 | 915  | 19                | 480 | 43 | 1090 | 40 | 1015 | 13  | 330 | 3                   | UBRSP | 57         | 1448                   | 46  | 21 | 79     | 36                       | 580  | 264 |
| SVP-2843-22-100-T6-4UBRSP57 | 36                 | 915  | 28                | 710 | 43 | 1090 | 40 | 1015 | 22  | 560 | 4                   | UBRSP | 57         | 1448                   | 46  | 21 | 116    | 53                       | 785  | 357 |
| SVP-3343-22-100-T6-5UBRSP57 | 36                 | 915  | 33                | 840 | 43 | 1090 | 40 | 1015 | 27  | 685 | 5                   | UBRSP | 57         | 1448                   | 46  | 21 | 137    | 62                       | 950  | 432 |
| SVP-3743-22-100-T6-5UBRSP57 | 36                 | 915  | 37                | 940 | 43 | 1090 | 40 | 1015 | 31  | 785 | 5                   | UBRSP | 57         | 1448                   | 46  | 21 | 153    | 70                       | 991  | 450 |
| SVP-1950-22-100-T6-3UBRSP64 | 42                 | 1065 | 19                | 480 | 50 | 1270 | 46 | 1170 | 13  | 330 | 3                   | UBRSP | 64         | 1626                   | 51  | 23 | 92     | 42                       | 645  | 293 |
| SVP-2850-22-100-T6-4UBRSP64 | 42                 | 1065 | 28                | 710 | 50 | 1270 | 46 | 1170 | 22  | 560 | 4                   | UBRSP | 64         | 1626                   | 51  | 23 | 135    | 61                       | 877  | 398 |
| SVP-3350-22-100-T6-5UBRSP64 | 42                 | 1065 | 33                | 840 | 50 | 1270 | 46 | 1170 | 27  | 685 | 5                   | UBRSP | 64         | 1626                   | 51  | 23 | 159    | 72                       | 1061 | 482 |



| Model Number                 | Maximum Belt Width |      | Platen Dimensions |      |    |      |    |      | Splice Length<br>(subtract 2 in / 50 mm for finger splice) |     | Traverse Bar System |        |            |      | Main Component Weights |    |        |     | Approximate Total Weight |     |
|------------------------------|--------------------|------|-------------------|------|----|------|----|------|--|-----|---------------------|--------|------------|------|------------------------|----|--------|-----|--------------------------|-----|
|                              |                    |      | A                 |      | B  |      | C  |      |  |     | Nbr of Sets         | Type   | Bar Length |      | Bar                    |    | Platen |     |                          |     |
|                              | in                 | mm   | in                | mm   | in | mm   | in | mm   | in   | mm  |                     |        | in         | mm   | lbs                    | kg | lbs    | kg  | lbs                      | kg  |
| SVP-3750-22-100-T6-5UBRSP64  | 42                 | 1065 | 37                | 940  | 50 | 1270 | 46 | 1170 | 31   | 785 | 5                   | UBRSP  | 64         | 1626 | 51                     | 23 | 178    | 81  | 1108                     | 504 |
| SVP-4350-22-100-T6-6UBRSP64  | 42                 | 1065 | 43                | 1090 | 50 | 1270 | 46 | 1170 | 37   | 940 | 6                   | UBRSP  | 64         | 1626 | 51                     | 23 | 207    | 94  | 1304                     | 593 |
| SVP-1958-22-100-T6-3UBRSP72  | 48                 | 1220 | 19                | 480  | 58 | 1475 | 54 | 1370 | 13   | 330 | 3                   | UBRSP  | 72         | 1829 | 58                     | 26 | 106    | 48  | 719                      | 327 |
| SVP-2858-22-100-T6-4UBRSP72  | 48                 | 1220 | 28                | 710  | 58 | 1475 | 54 | 1370 | 22   | 560 | 4                   | UBRSP  | 72         | 1829 | 58                     | 26 | 157    | 71  | 981                      | 446 |
| SVP-3358-22-100-T6-5UBRSP72  | 48                 | 1220 | 33                | 840  | 58 | 1475 | 54 | 1370 | 27   | 685 | 5                   | UBRSP  | 72         | 1829 | 58                     | 26 | 185    | 84  | 1187                     | 540 |
| SVP-3758-22-100-T6-5UBRSP72  | 48                 | 1220 | 37                | 940  | 58 | 1475 | 54 | 1370 | 31   | 785 | 5                   | UBRSP  | 72         | 1829 | 58                     | 26 | 207    | 94  | 1242                     | 565 |
| SVP-4358-22-100-T6-6UBRSP72  | 48                 | 1220 | 43                | 1090 | 58 | 1475 | 54 | 1370 | 37   | 940 | 6                   | UBRSP  | 72         | 1829 | 58                     | 26 | 240    | 109 | 1463                     | 665 |
| SVP-1965-22-100-T6-3UBRSP79  | 54                 | 1370 | 19                | 480  | 65 | 1650 | 60 | 1525 | 13   | 330 | 3                   | UBRSP  | 79         | 2007 | 63                     | 29 | 119    | 54  | 784                      | 357 |
| SVP-2865-22-100-T6-4UBRSP79  | 54                 | 1370 | 28                | 710  | 65 | 1650 | 60 | 1525 | 22   | 560 | 4                   | UBRSP  | 79         | 2007 | 63                     | 29 | 175    | 80  | 1072                     | 487 |
| SVP-3365-22-100-T6-5UBRSP79  | 54                 | 1370 | 33                | 840  | 65 | 1650 | 60 | 1525 | 27   | 685 | 5                   | UBRSP  | 79         | 2007 | 63                     | 29 | 207    | 94  | 1298                     | 590 |
| SVP-3765-22-100-T6-5UBRSP79  | 54                 | 1370 | 37                | 940  | 65 | 1650 | 60 | 1525 | 31   | 785 | 5                   | UBRSP  | 79         | 2007 | 63                     | 29 | 232    | 105 | 1360                     | 618 |
| SVP-4365-22-100-T6-6UBRSP79  | 54                 | 1370 | 43                | 1090 | 65 | 1650 | 60 | 1525 | 37   | 940 | 6                   | UBRSP  | 79         | 2007 | 63                     | 29 | 270    | 123 | 1601                     | 728 |
| SVP-1971-22-100-T6-3UBRNS85  | 60                 | 1525 | 19                | 480  | 71 | 1800 | 66 | 1675 | 13   | 330 | 3                   | UBRNS  | 85         | 2159 | 68                     | 31 | 130    | 59  | 834                      | 379 |
| SVP-2871-22-100-T6-4UBRSP85  | 60                 | 1525 | 28                | 710  | 71 | 1800 | 66 | 1675 | 22   | 560 | 4                   | UBRSP  | 85         | 2159 | 68                     | 31 | 192    | 87  | 1150                     | 523 |
| SVP-3371-22-100-T6-5UBRSP85  | 60                 | 1525 | 33                | 840  | 71 | 1800 | 66 | 1675 | 27   | 685 | 5                   | UBRSP  | 85         | 2159 | 68                     | 31 | 226    | 103 | 1393                     | 633 |
| SVP-3771-22-100-T6-5UBRSP85  | 60                 | 1525 | 37                | 940  | 71 | 1800 | 66 | 1675 | 31   | 785 | 5                   | UBRSP  | 85         | 2159 | 68                     | 31 | 253    | 115 | 1460                     | 664 |
| SVP-4371-22-100-T6-6UBRSP85  | 60                 | 1525 | 43                | 1090 | 71 | 1800 | 66 | 1675 | 37   | 940 | 6                   | UBRSP  | 85         | 2159 | 68                     | 31 | 294    | 134 | 1720                     | 782 |
| SVP-1984-22-100-T6-3UBRXNS98 | 72                 | 1830 | 19                | 480  | 84 | 2135 | 78 | 1980 | 13   | 330 | 3                   | UBRXNS | 98         | 2489 | 99                     | 45 | 154    | 70  | 1082                     | 492 |
| SVP-2884-22-100-T6-4UBRXSP98 | 72                 | 1830 | 28                | 710  | 84 | 2135 | 78 | 1980 | 22   | 560 | 4                   | UBRXSP | 98         | 2489 | 99                     | 45 | 227    | 103 | 1489                     | 677 |
| SVP-3384-22-100-T6-5UBRXSP98 | 72                 | 1830 | 33                | 840  | 84 | 2135 | 78 | 1980 | 27   | 685 | 5                   | UBRXSP | 98         | 2489 | 99                     | 45 | 267    | 121 | 1811                     | 823 |
| SVP-3784-22-100-T6-5UBRXSP98 | 72                 | 1830 | 37                | 940  | 84 | 2135 | 78 | 1980 | 31   | 785 | 5                   | UBRXSP | 98         | 2489 | 99                     | 45 | 300    | 136 | 1890                     | 859 |

- Specifications are subject to change without notice.
- Integral cooling standard on all units.
- Total weights include electrical control panel, cable sets and set-up templates for all models.
- Temperature adjustable between 200 - 325 deg. F (93 - 163 deg. C).
- Sectional vulcanizers are built on a 22 degree bias with a left hand lead.