

Broad Ripple Avenue

College Avenue to Primrose Avenue

Ericka Miller, PE, PTOE
Indianapolis DPW
Chief Engineer

Jessica Hawley, PE
Lochmueller Group
Project Manager



**BROAD
RIPPLE**

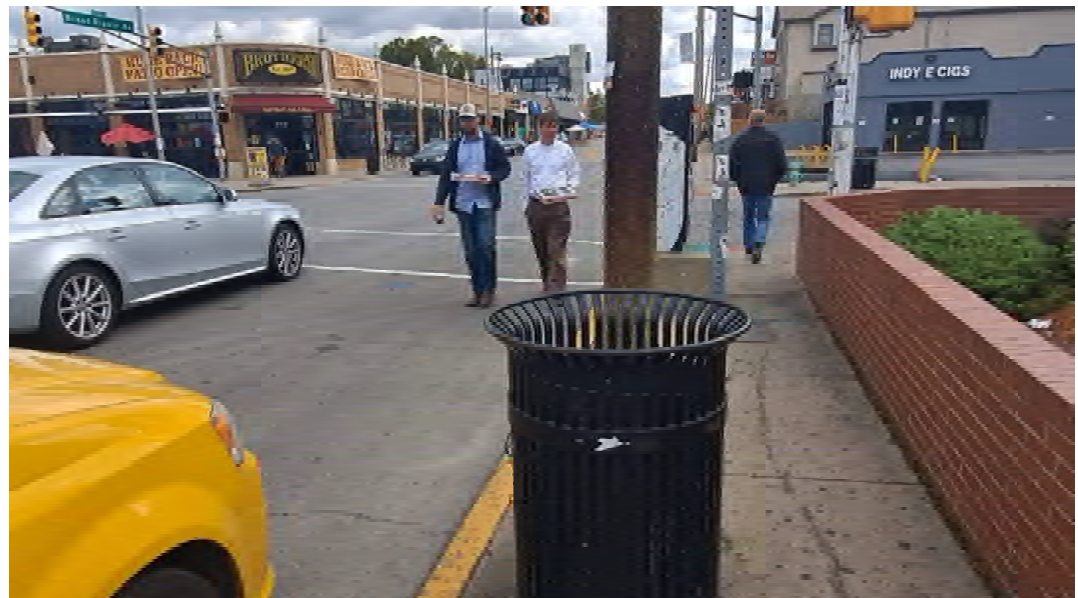
Welcome

- Introductions
- Project Need
- Proposed Improvements
- Public Comments
- Conclusion



Project Need

- Stormwater capacity & flooding
- ADA accessibility
- Safety
- Greenspace
- Regional transit connectivity



Project Area

Broad Ripple Ave.

- Reconstruction – College Ave. to Monon Crossing
- RiverWalk Addition – Monon Crossing to Primrose Ave.

Carrollton Ave.

- Stormwater Improvements – 250' south of Broad Ripple Ave.

Guilford Ave.

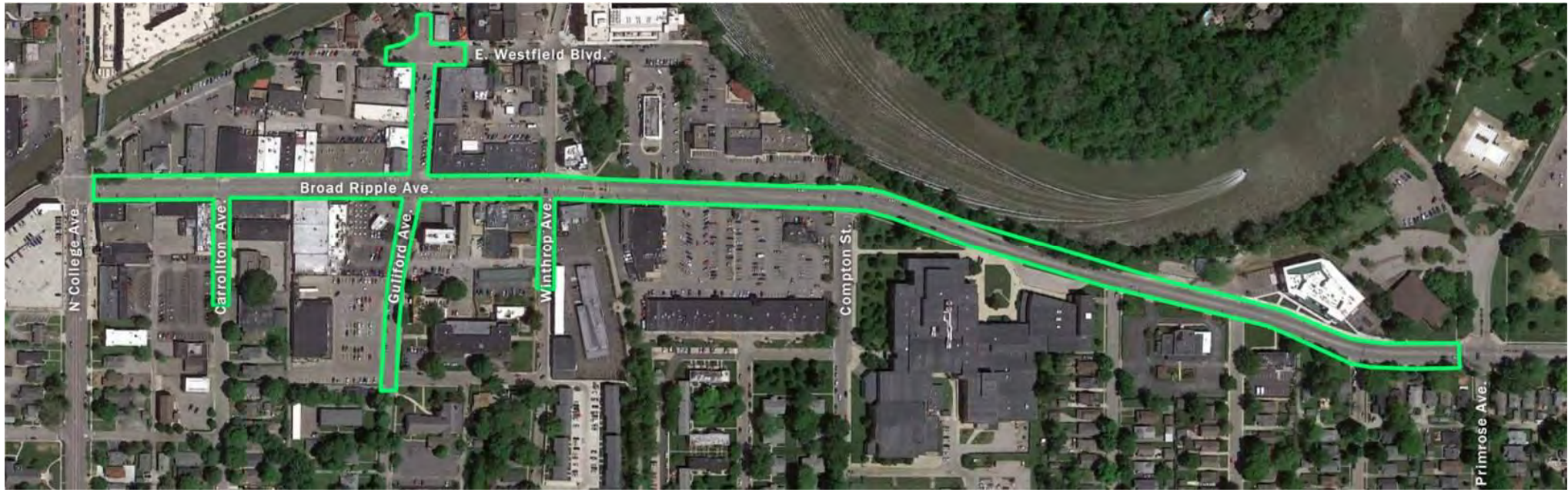
- Stormwater Improvements – Approx. 275' south of Broad Ripple Ave.
- Stormwater Improvements – North of Broad Ripple Ave. to Westfield Blvd.

Winthrop Ave.

- Stormwater Improvements – Approx. 190' south of Broad Ripple Ave.

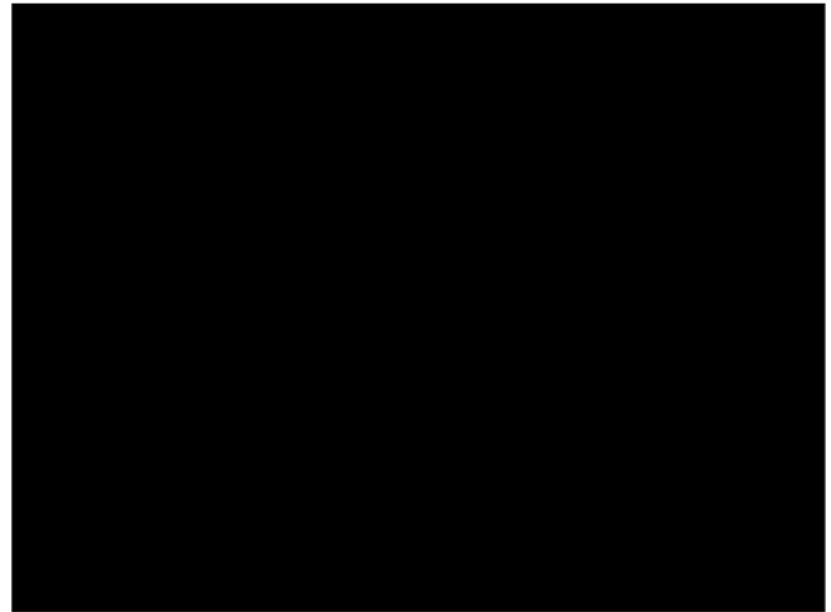


Project Area



Project Solution: Stormwater

- New stormwater trunkline, manholes, & inlets
- Stormwater treatment structures
- Roadway underdrains
- Permeable pavers

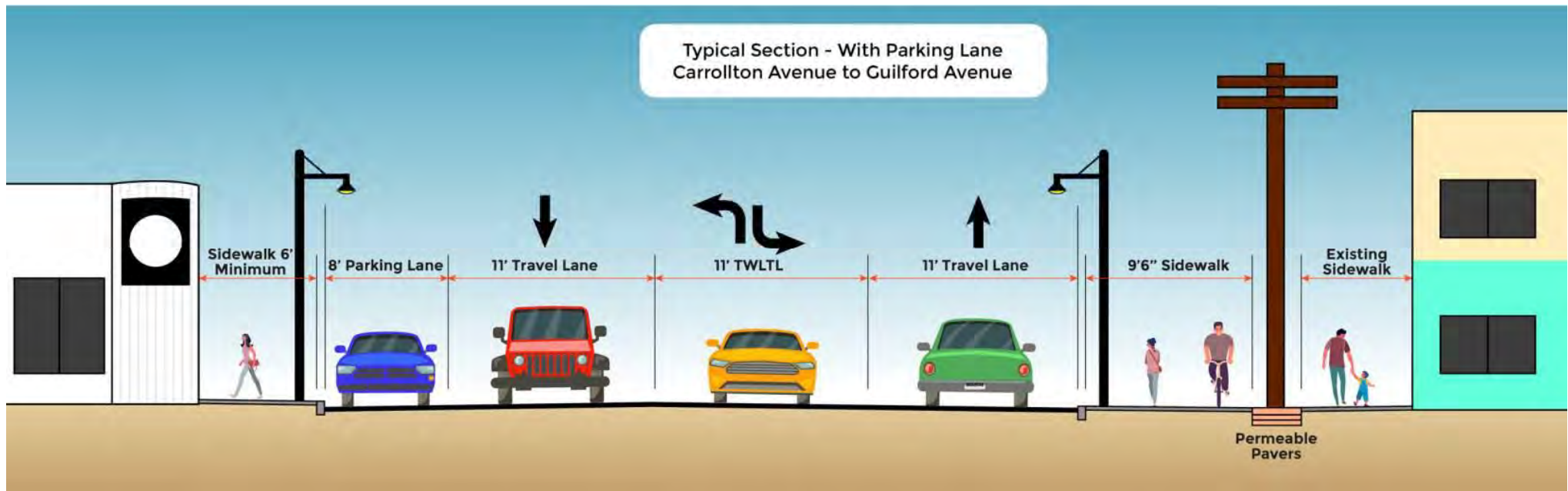


Project Solution: Transportation

- Sidewalk & pavement replacement
- Widened south-side sidewalk from College Ave. to Winthrop Ave.
- New 12'-wide multi-use path from the Monon Trail to Primrose Ave.



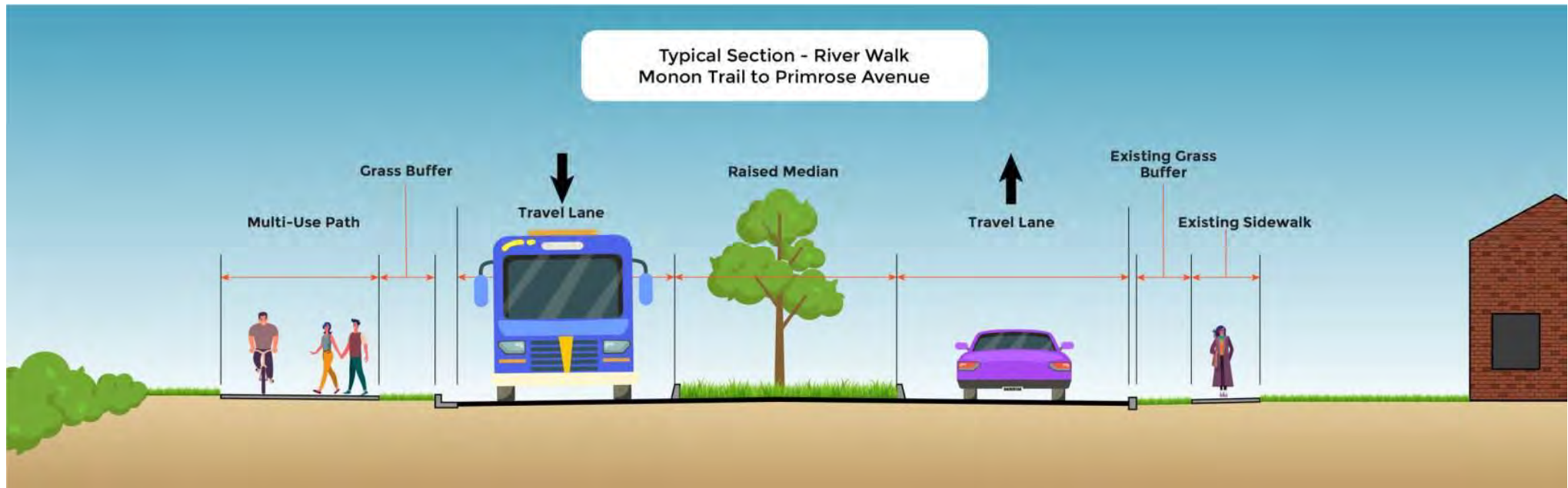
Project Solution: Transportation



Project Solution: Transportation



Project Solution: Transportation



Project Schedule

- October 2021: Design complete
- Spring 2022: Construction begins
- Fall 2022: Construction complete



Managing Construction

Option 1: Full Closure

College Ave. to Winthrop Ave.

- Approx. 4-month closure
- 1 construction season
- Approx. \$100k in MOT Savings

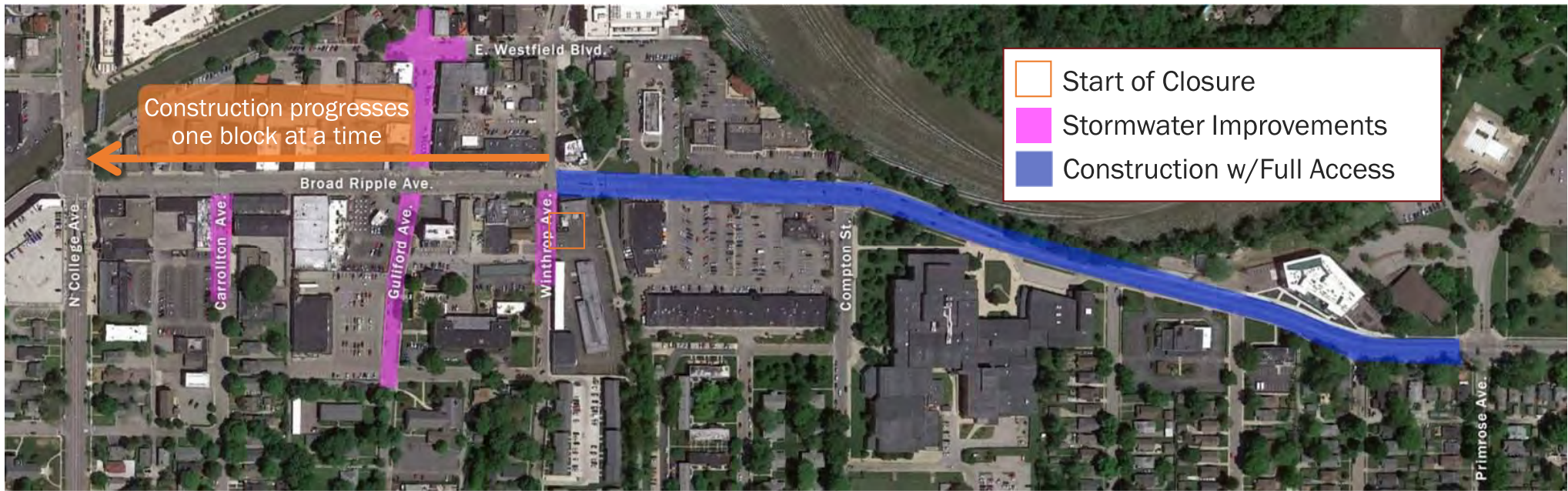
Option 2: Phased Construction

All areas

- Approx. 9 months of construction
- 2 construction seasons
- More complex pedestrian access



Managing Construction

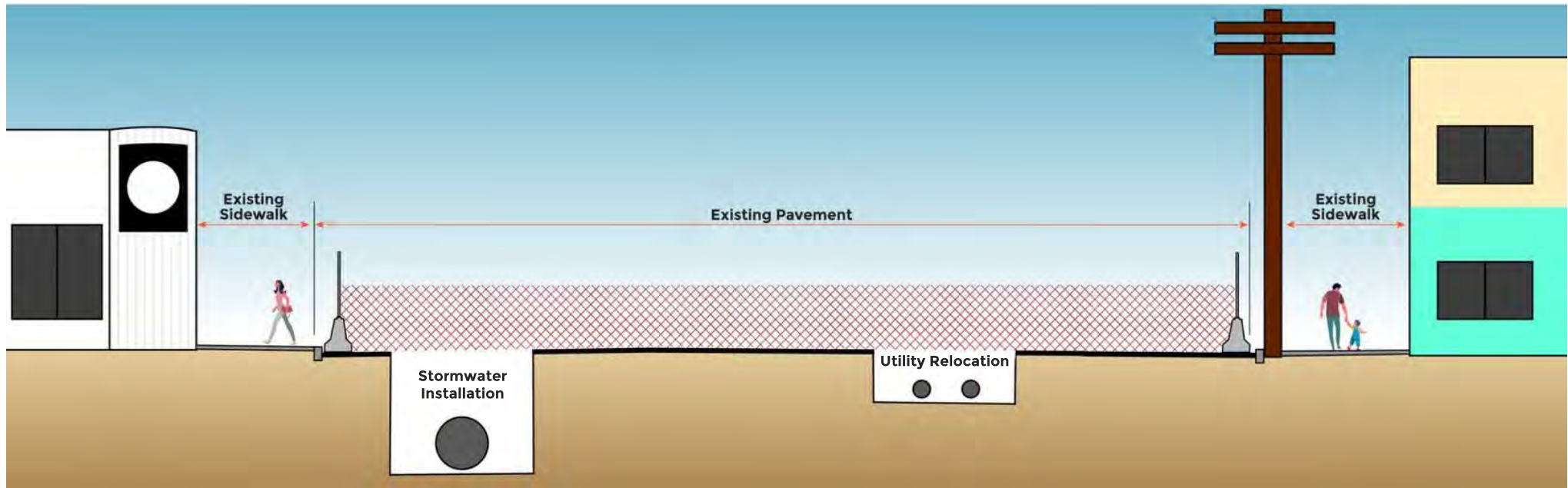


Pedestrian Access

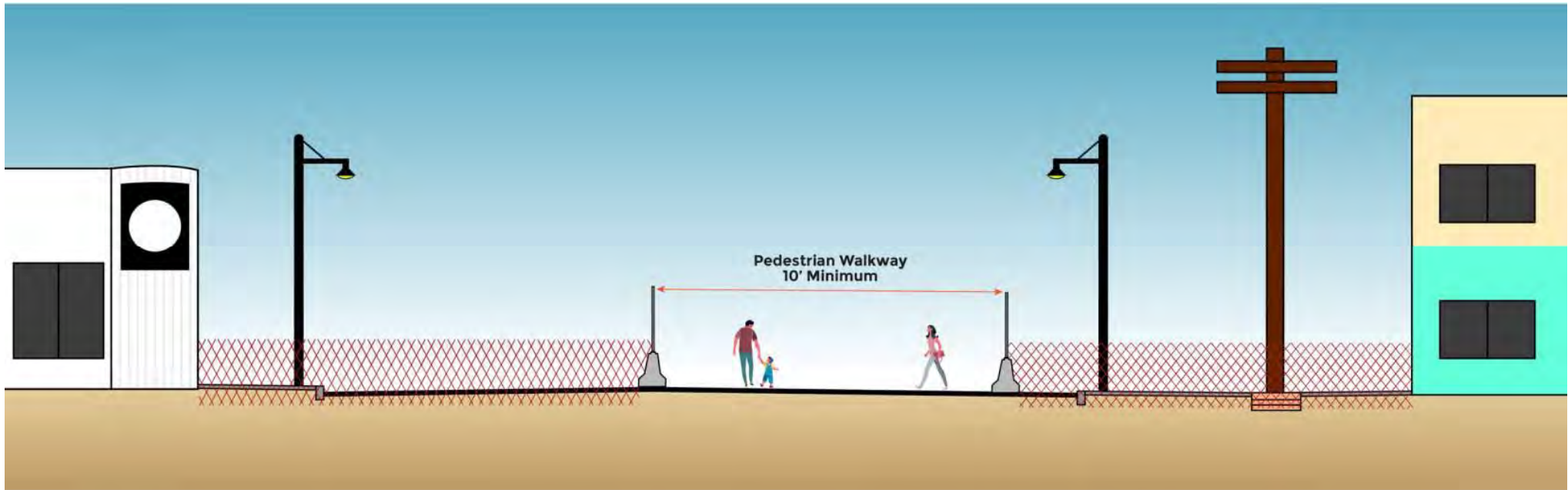
- Flexible & accommodating
- Existing sidewalks open during stormsewer installation
- Pedestrian access maintained on pavement during sidewalk reconstruction
- Business-focused signage for pedestrian detours



Pedestrian Access During Construction



Pedestrian Access During Construction



Parking After Construction

- Proposed 58 parking meter additions in the community
- Carrollton Ave. to Guilford Ave. – north side parking available



Pedestrian-Friendly Design

- ADA-compliant curb ramp construction
- Pedestrian & traffic signal upgrades
- Ornamental lighting from College Ave. to Winthrop Ave.



Sidewalk Improvements

- South side: Widen sidewalk from College Ave. to Winthrop Ave.
- North side: Widen sidewalk from Guilford Ave. to Winthrop Ave.
- Existing sidewalk to be replaced throughout



Pedestrian & ADA Upgrades

- ADA-compliant curb ramp construction
- Pedestrian & traffic signal upgrades
- Rapid Flashing Beacon at mid-block crossings (Carrolton Ave. & the Monon)
- Updated decorative crosswalk markings
- Ornamental lighting



Illumination Footprint



**BROAD
RIPPLE**

Green Spaces

- Landscaping:
 - Parking areas
 - Sidewalk Bump-outs
- Medians:
 - From Monon crossing to Primrose Ave.
 - Grassed with trees



IndyGo Access & Ride Sharing

- Multi-use path connectivity from Broad Ripple Park to IndyGo Red Line station at College Ave.
- All existing IndyGo bus stops remain in place post-construction
- Improvements to all bus stops
- Ride share pick-up/drop-off zones are being coordinated through the City and with Uber/Lyft



Public Contact

Send comments to:

Jenelle Bunton

Indy DPW PIO

O: 317-327-2311

jenelle.bunton@indy.gov



Access to the presentation:

<https://www.indy.gov/activity/major-transportation-projects>