

STEEL CABLE Splice Testing



Shaw Almex is now able to offer X-ray scanning and analysis as part of its Quality Assurance for steel cable splice. The X-ray system which is state of the art equipment in mobility and ruggedness, are designed for field use and when analyzed by Almex's conveyor belt experts it becomes the ultimate tool for ensuring splice integrity.

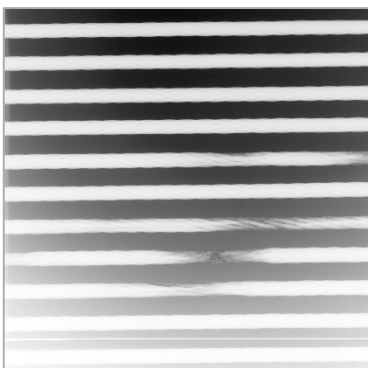
Non Destructive Splice Testing

High tension steel cable splices require precision in their construction and lay up. If cables are misaligned or the cables are cut incorrectly premature splice failures will occur. X-rays are the only method to determine whether or not the splice has been properly done and the splice will have the proper strength when put into service. Splice life can be projected when the x-rays are analyzed by an experienced splice x-ray technician.

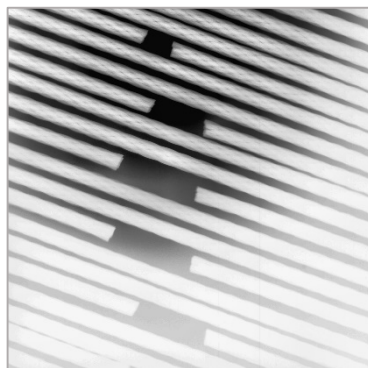


FEATURES

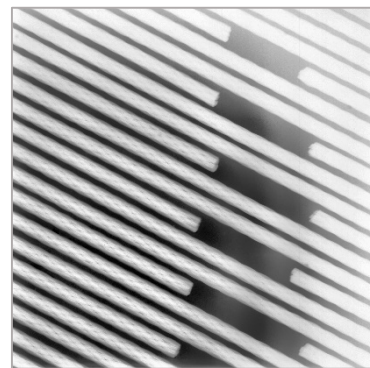
- Units are highly portable and have batteries for power allowing operation in remote locations.
- Stitching software allows a series of images to be assembled to create a complete splice image.
- There are systems for either fabric or steel cable belting installations.



X-ray Showing Damaged Cables



X-ray With Uneven Cable Gap



X-ray Of Ideal Splice & Cables