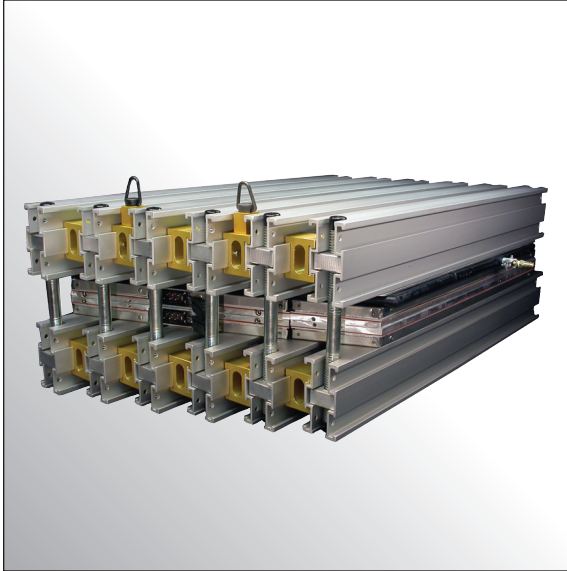




UNIPRESS

SECTIONAL VULCANIZING PRESS



Engineered by Shaw Almex is the versatile UniPress. The premier sectional press, UniPress offers the amenities of both a sectional and frame vulcanizer. As with all pressing equipment from Almex, each UniPress is distinguished by the core competencies of Almex technology, including:

FEATURES

- Signature Almex "Pressure Bag" uniform pressure system
- Custom "Extruded Plank" cooling system within platens
- Innovative "Silicone Element" heating system
- Light but sturdy structure of extruded aluminum traverse bars
- T4P Temperature Control Panel for reliable heat monitoring
- Optional HPP20-4 fluid pressure pump and reservoir unit mandatory for operating pressures above 7kg/cm² (100 psi)
- UniPress offers the portability of a sectional press along with the single upper piece lifting function of a frame press
- Anodized gold connectors bridge individual traverse bars into a uniform section that can be positioned without disassembling the vulcanizer
- Platens can assume either a rectangular or rhombic shape and will join other platens for expandability
- Each UniPress is built-to-order for various belt sizes
- All electronics are CE, CSA and UL approved

SPECIFICATIONS

- **PLATEN** Flexible platens contour with the irregularities in the belt ensuring uniform pressure across entire splice area. Platens built with extruded plank, silicone heating elements (up to 163°C (325°F) and durable composite insulating packaging. UniPress platens specially designed to assume either a rectangular or rhombic (bias) shape over splice portion.
- **TRAVERSE BARS** Aluminum alloy LA-style bars are strong and light. LA-bars are sized to order and are connected with inset high tensile steel nut/bolt assemblies that reduce profile of press. Upper bars are joined with the anodized gold "Connector and Lifting System" that allow upper portion of press to be lifted and positioned as a single assembly establishing correct bar spacing which provides additional safety. Can be used with E style bar system.
- **CONTROL PANEL** T4P control panel utilizes a dual Omron digital temperature control and indication system and can accommodate 230 to 600 volts. Controls housed in a light, sturdy aluminum box for remote operation.
- **PRESSURE/COOLING** Optional HPP20-4 pressure pump and reservoir for operating pressures above 7kg/cm² (100 psi).



Note: The above data is based on extensive testing and represents standard values. Shaw Almex Industries reserves the right to make changes without prior notice and refuses all claims arising from such changes. All items are subject to change without previous notice.

Updated: Nov. 2011